

Light efficiency:

95 Lumen/Watt

Light quality:

CRI: 82.0

Color temperature:

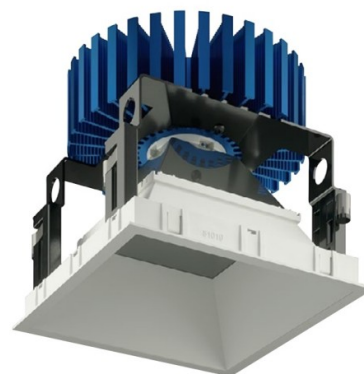
3031 K

Output: 3802 lm

Peak: 3025 cd

Power: 39.9 W

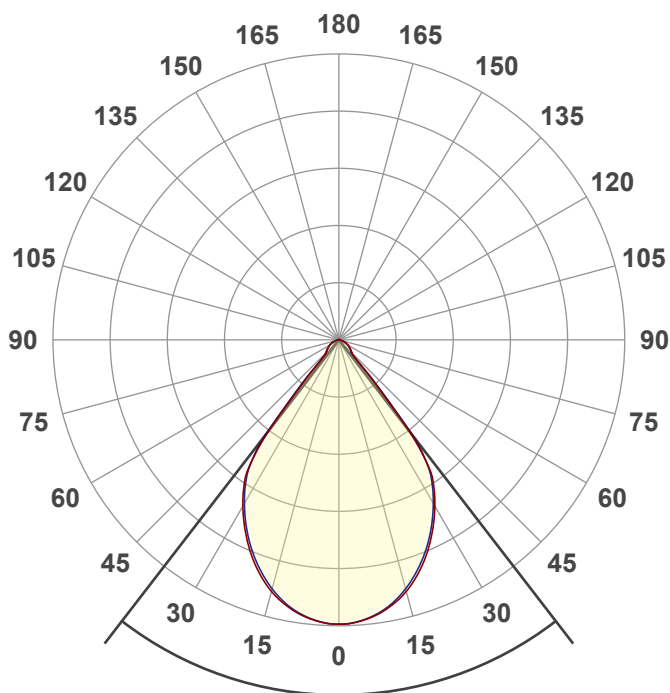
PF: 0.98



NU6-QD-SW-45LM-30K-80-D75-WH-WH

Date and time:

9/7/2022 10:36:15 AM



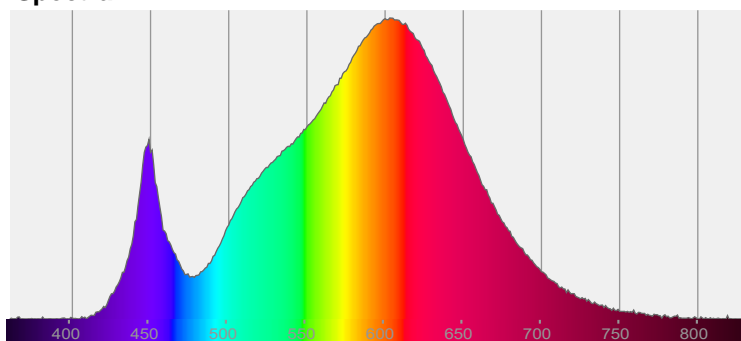
Beam angle

75.3°

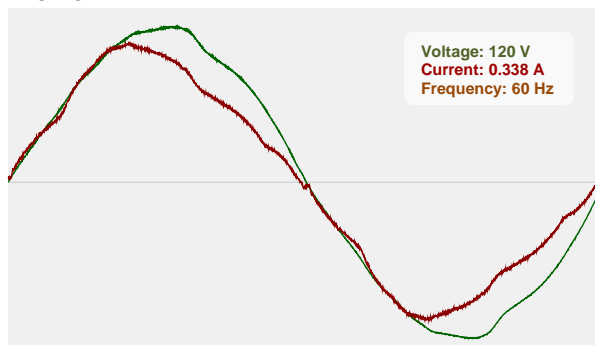


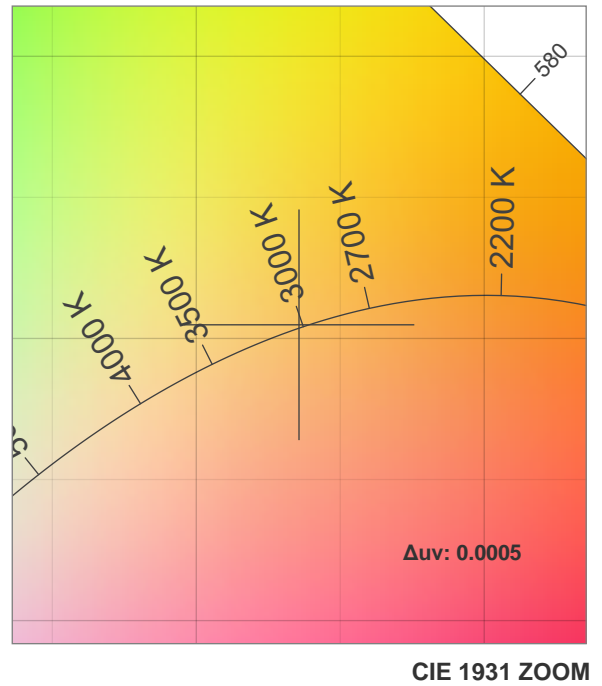
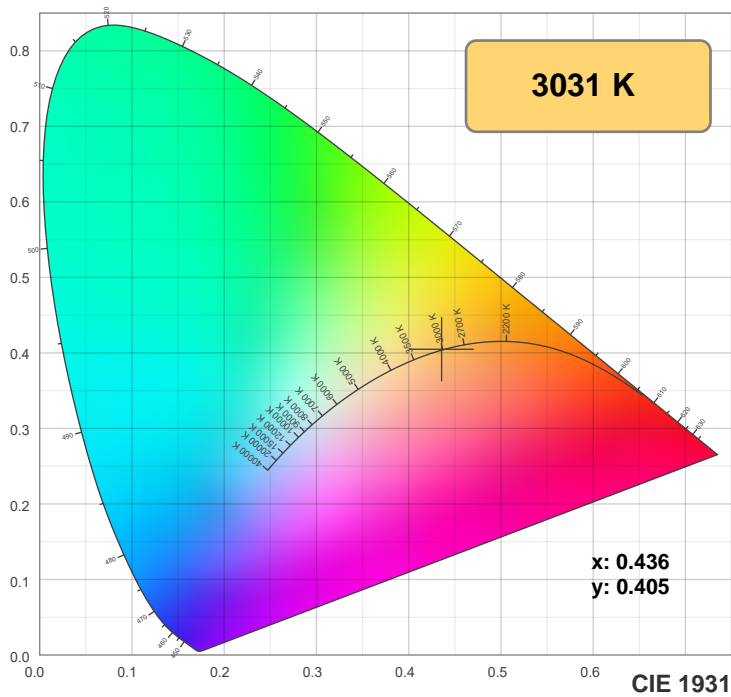
CIE 1931  
x: 0.436  
y: 0.405

Spectra

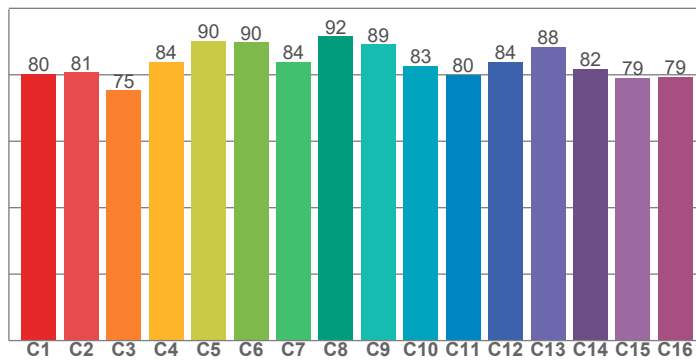


Power

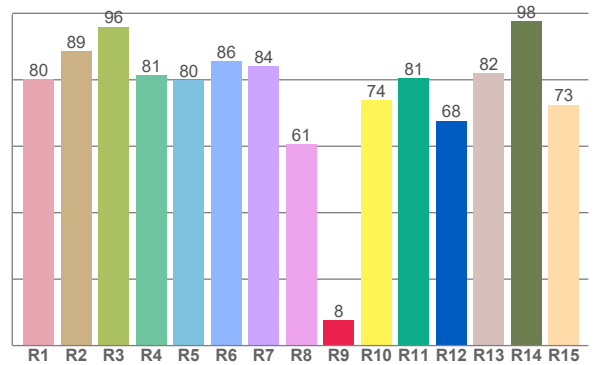




TM30: 83.7



CRI: 82.0 (R1-R8)



CRI R values, only R1-R8 are used to calculate final CRI value

R1	R2	R3	R4	R5	R6	R7	R8	R9	R10	R11	R12	R13	R14	R15
80.2	88.6	95.9	81.3	79.9	85.6	84.1	60.5	7.5	73.8	80.5	67.6	82.0	97.6	72.5

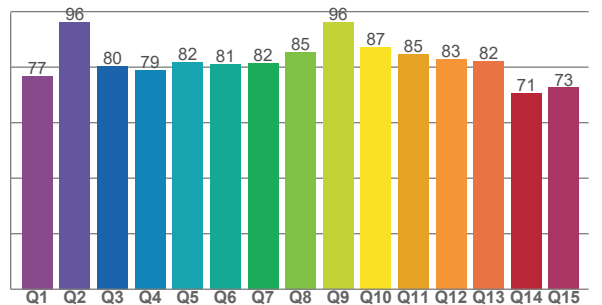
TM30 C values, 16 binned values out of total of 99 C values

C1	C2	C3	C4	C5	C6	C7	C8	C9	C10	C11	C12	C13	C14	C15	C16
80.2	80.7	75.3	84.0	90.2	89.8	83.9	91.6	89.2	82.6	79.9	83.9	88.4	81.7	79.0	79.3

CQS Q values

Q1	Q2	Q3	Q4	Q5	Q6	Q7	Q8	Q9	Q10	Q11	Q12	Q13	Q14	Q15
76.8	96.3	80.4	78.9	81.8	81.2	81.5	85.5	96.2	87.3	84.7	82.9	82.2	70.7	72.7

CQS: 81.2



## Color parameters

Color temperature	Color rendering index	Red component	Color fidelity	Color gamut	Color quality scale	Color coordinate cie 1931	Color coordinate cie 1931	Color coordinate	Color coordinate	Color deviation from black body
CCT	CRI	CRI R9	TM30 Rf	TM30 Rg	CQS	x	y	u	v	Δuv
3031 K	82.0	7.5	83.7	97.7	81.2	0.436	0.405	0.249	0.348	0.0005

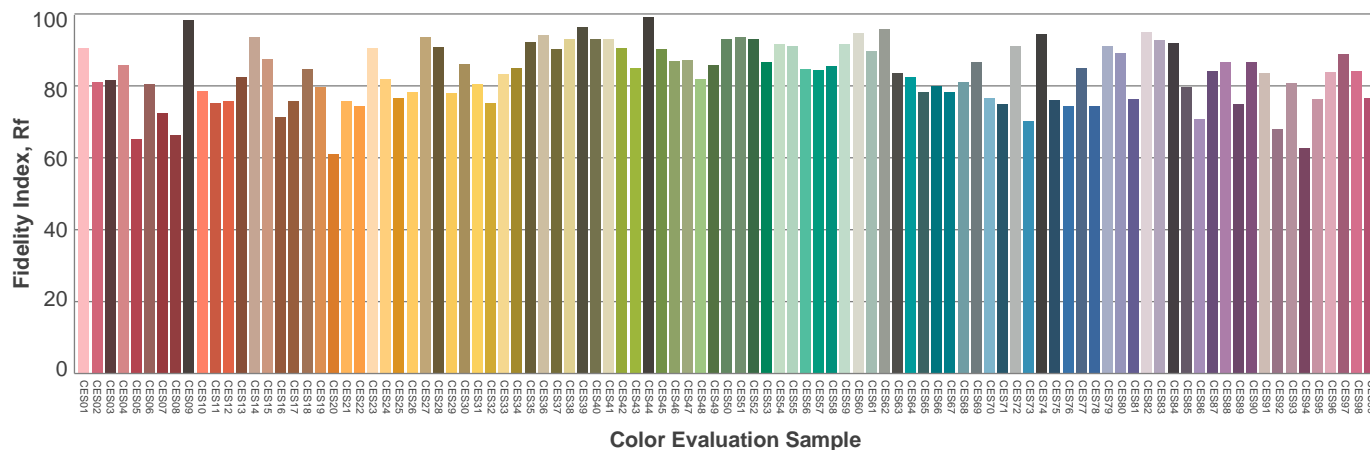
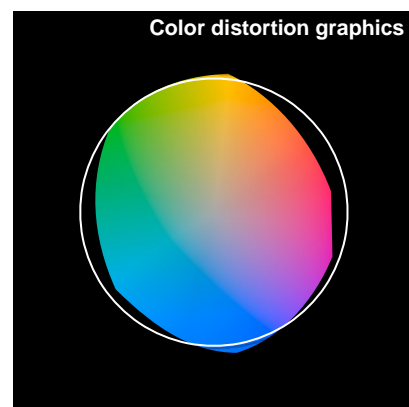
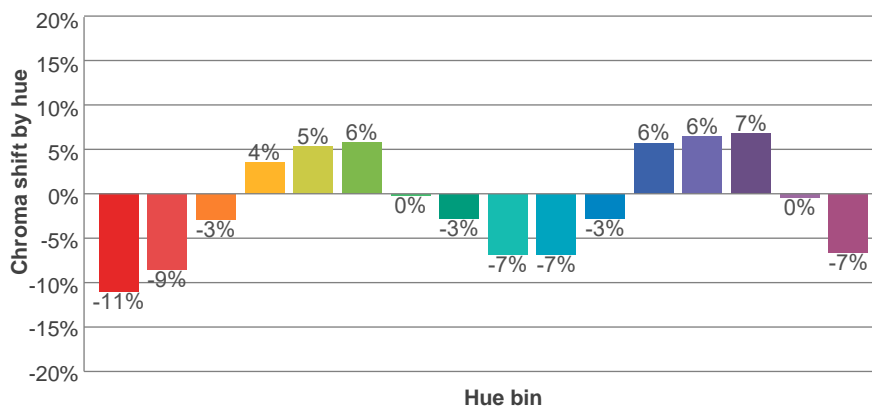
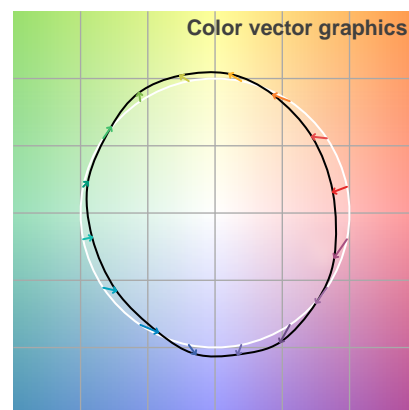
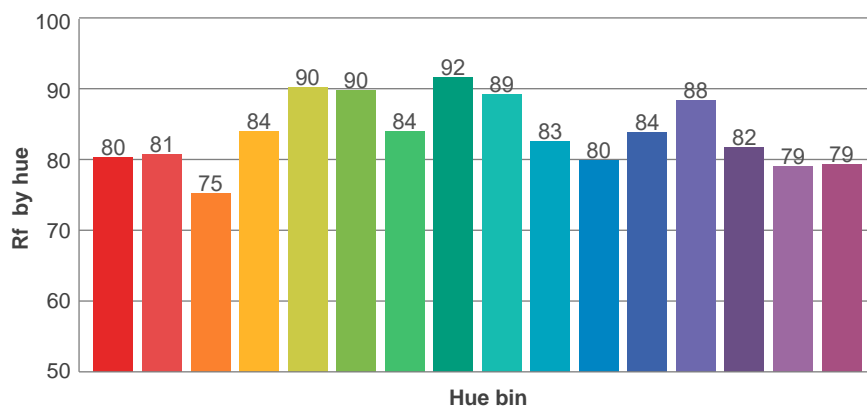
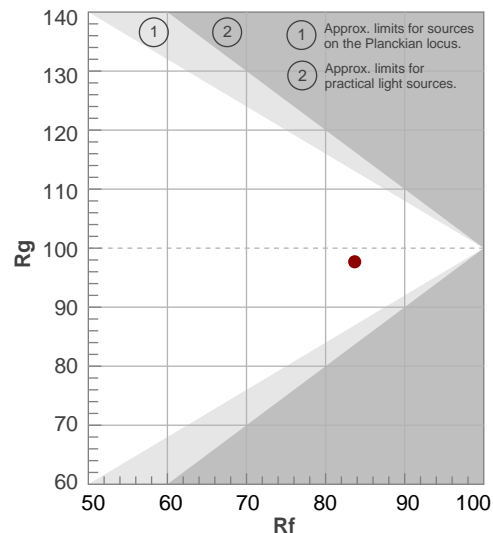
**Rf 83.7**

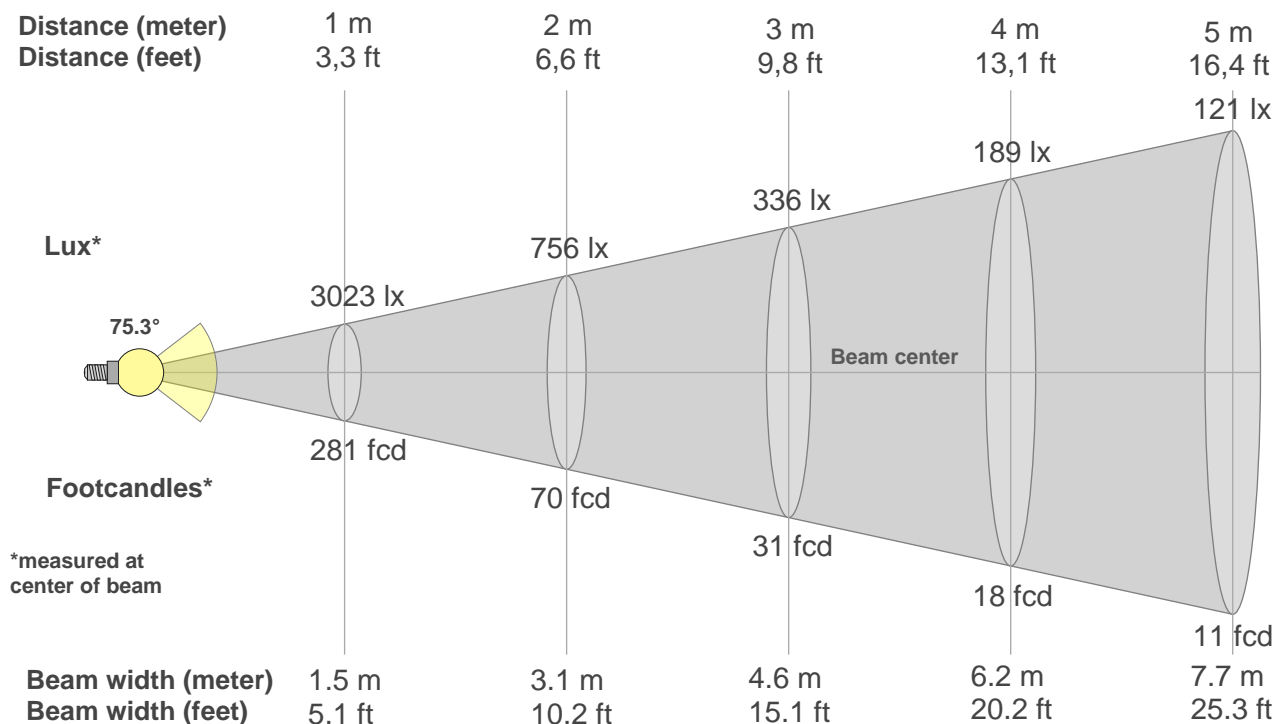
Fidelity index Rf

**Rg 97.7**

Gamut index Rg

Hue Bin	R <sub>f</sub>	Graphic shifts (%)	
		Chroma	Hue
1	80	-11%	-2%
2	81	-9%	7%
3	75	-3%	13%
4	84	4%	10%
5	90	5%	6%
6	90	6%	-3%
7	84	0%	-10%
8	92	-3%	-4%
9	89	-7%	0%
10	83	-7%	7%
11	80	-3%	14%
12	84	6%	6%
13	88	6%	-4%
14	82	7%	-13%
15	79	0%	-14%
16	79	-7%	-15%





#### Beam intensities from 1-20m

1m	2m	3m	4m	5m	6m	7m	8m	9m	10m	11m	12m	13m	14m	15m	16m	17m	18m	19m	20m
3.3ft	6.6ft	9.8ft	13.1ft	16.4ft	19.7ft	23ft	26.2ft	29.5ft	32.8ft	36.1ft	39.4ft	42.7ft	45.9ft	49.2ft	52.5ft	55.8ft	59.1ft	62.3ft	65.6ft
3023lx	756lx	336lx	189lx	121lx	84lx	62lx	47lx	37lx	30lx	25lx	21lx	18lx	15lx	13lx	12lx	10lx	9lx	8lx	8lx
280.9fcd	70.2fcd	31.2fcd	17.6fcd	11.2fcd	7.8fcd	5.7fcd	4.4fcd	3.5fcd	2.8fcd	2.3fcd	2fcd	1.7fcd	1.4fcd	1.2fcd	1.1fcd	1fcd	0.9fcd	0.8fcd	0.7fcd

#### Intensities in 0° c-plane

0°	2°	4°	6°	8°	10°	12°	14°	16°	18°	20°	22°	24°	26°	28°	30°	32°	34°	36°	38°
3023	3020	3005	2981	2949	2908	2859	2802	2735	2655	2569	2475	2374	2268	2158	2042	1917	1767	1518	1112
100%	100%	99%	99%	98%	96%	95%	93%	90%	88%	85%	82%	79%	75%	71%	68%	63%	58%	50%	37%

#### Intensities in 90° c-plane

0°	2°	4°	6°	8°	10°	12°	14°	16°	18°	20°	22°	24°	26°	28°	30°	32°	34°	36°	38°
3023	3019	3002	2976	2941	2896	2841	2777	2704	2622	2535	2442	2342	2237	2125	2009	1885	1740	1526	1174
100%	100%	99%	98%	97%	96%	94%	92%	89%	87%	84%	81%	77%	74%	70%	66%	62%	58%	50%	39%

#### Intensities in 180° c-plane

0°	2°	4°	6°	8°	10°	12°	14°	16°	18°	20°	22°	24°	26°	28°	30°	32°	34°	36°	38°
3023	3020	3005	2981	2949	2908	2859	2802	2735	2655	2569	2475	2374	2268	2158	2042	1917	1767	1518	1112
100%	100%	99%	99%	98%	96%	95%	93%	90%	88%	85%	82%	79%	75%	71%	68%	63%	58%	50%	37%

#### Intensities in 270° c-plane

0°	2°	4°	6°	8°	10°	12°	14°	16°	18°	20°	22°	24°	26°	28°	30°	32°	34°	36°	38°
3023	3019	3002	2976	2941	2896	2841	2777	2704	2622	2535	2442	2342	2237	2125	2009	1885	1740	1526	1174
100%	100%	99%	98%	97%	96%	94%	92%	89%	87%	84%	81%	77%	74%	70%	66%	62%	58%	50%	39%

Beam angle 50%	Field angle 10%	Cutoff angle 2,5%	Intensity ratio in 120° cone	Intensity ratio in 90° cone
75.3°	89.9°	134.1°	96.4%	89.7%